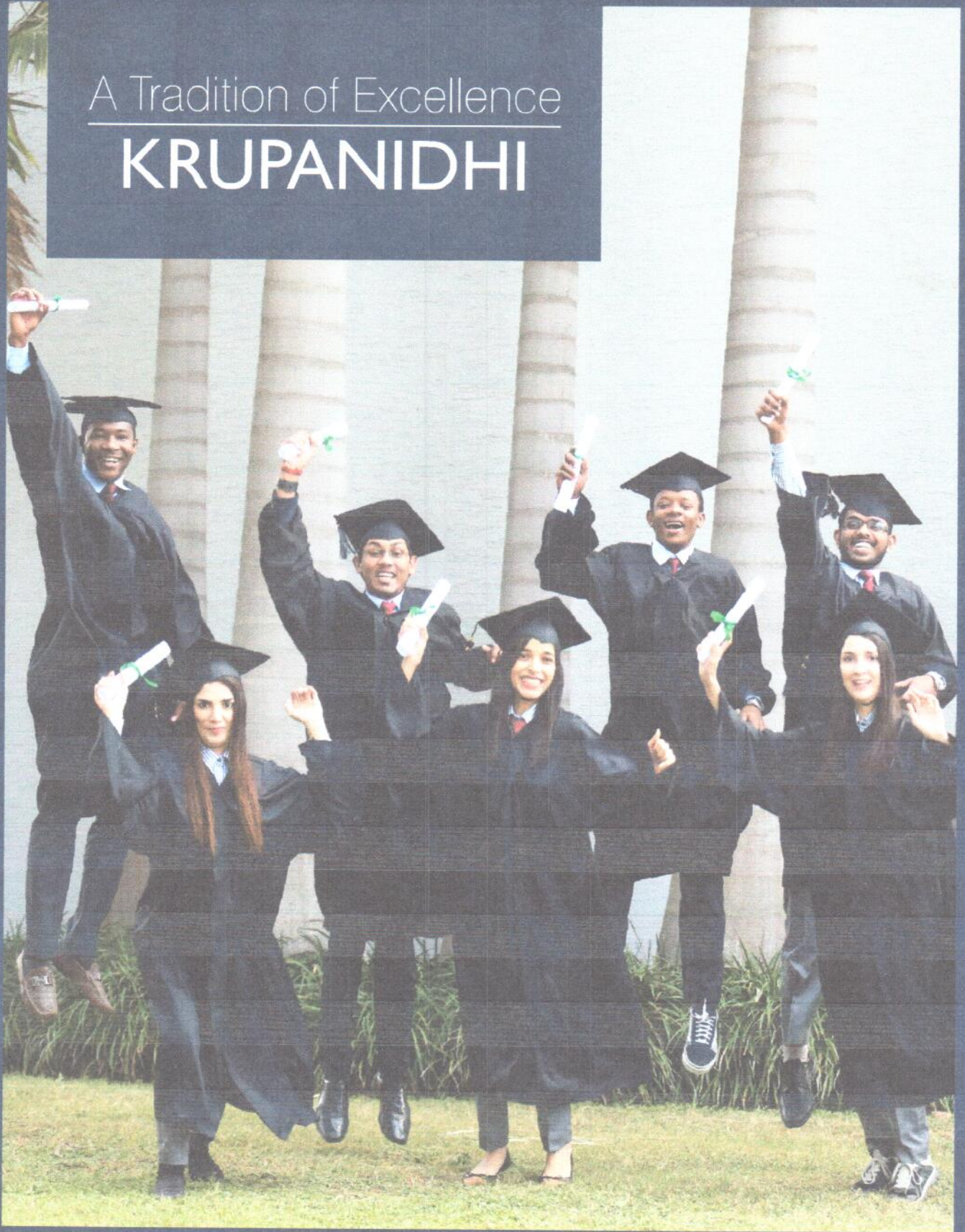


A Tradition of Excellence
KRUPANIDHI



PROSPECTUS 2016-17
MBA | MCA



KRUPANIDHI
GROUP OF INSTITUTIONS



[Signature]

Principal

Krupanidhi Group of Institutions
12/1 Chikkabellandur Village,
Carmelaram Road Post Varthur Hobli
Bangalore - 560 035

KRUPANIDHI GROUP OF INSTITUTIONS

Krupanidhi Group of Institutions greatest strength in education is its attention to each individual student. You'll benefit from a multidimensional experience designed to help you create your path, expand your world, and achieve a lifetime of success. You'll receive an exceptional education that combines theoretical and real-world knowledge with a global perspective, innovation and creativity – all in a distinctly student-centered learning environment that's transformative and empowering. You'll belong to a dynamic community with an atmosphere of purpose. When you graduate, you'll be ready with the knowledge, skills, credentials, and qualities of character to lead and succeed in an age of unlimited global opportunity.



SUBJECT EXPERTS



Prof. JAMES F. JORDAN
Carnegie Mellon University
CEO at Pittsburgh



KOTHANDARAMAN SRIDHARAN
CEO of MLC
Stanford University



Dr. R. RAJENDRAN
CEO & Founder of
GREEN CHEM



Dr. NAGENDRA SWAMY
Sr. President, Group Medical
Director & Chairman Quality
Council at Manipal Health
Enterprises



Dr. CHANDRIKA KAMBAM
Vice President-Clinical
Services at COLUMBIA ASIA
HOSPITAL



Shri. STEPHEN PAUL
Ex. Sr Vice President,
POLARIS



Dr. RANGARAJAN
Coach & Visionary-Indian
Education System



Dr. KALYANI RANGARAJAN
Ex. Dean, VIT Business
School



Shri. MANOJ KRISHNAN
CIO Landmark Group




Principal

Krupanidhi Group of Institutions
12/1 Chikkabellandur Village,
Carmelaram Road Post Varthur Hobli,
Bangalore - 560 035

MBA PROGRAM

| Semester | Course code | Course Name |
|--------------------------|-----------------------------------|---|
| 1 st Semester | 1.1 | Economics for managers |
| | 1.2 | Organisational behaviour |
| | 1.3 | Accounting for managers |
| | 1.4 | Statistics for management |
| | 1.5 | Marketing for Customer Value |
| | 1.6 | Business and industry |
| | 1.7 | Communication skills |
| 2 nd Semester | 2.1 | Technology for management |
| | 2.2 | Managerial research methods |
| | 2.3 | Entrepreneurship and ethics |
| | 2.4 | Human Capital Management |
| | 2.5 | Financial Management |
| | 2.6 | Quantitative techniques and operations research |
| | 2.7 | Innovation management |
| 3 rd Semester | 3.1 | Strategic management and corporate governance |
| | 3.2 | Projects and operation management |
| | | Project work |
| | | Open Elective 3.10 |
| | | Electives under specialization scheme |
| | | Finance |
| | 3.3.1 | Indian financial system |
| | 3.3.2 | Corporate Tax planning and management |
| | 3.3.3 | CORPORATE VALUATION AND RESTRUCTURING |
| | | Marketing |
| | 3.4.1 | Retailing management and services |
| | 3.4.2 | Consumer behaviour |
| | 3.4.3 | Rural and agricultural marketing |
| | | Human Resources |
| | 3.5.1 | Learning and development |
| 3.5.2 | Industrial and employee relations | |
| 3.5.3 | Performance management system | |
| 4 th Semester | 4.1 | International business dynamics |
| | | Electives under specialization scheme |
| | | Finance |
| | 4.2.1 | Investment Analysis and Management |
| | 4.2.2 | International Financial management |
| 4.2.3 | Risk Management and derivatives | |
| | Human Resource | |



[Handwritten Signature]

Principal

Krupanidhi Group of Institutions
12/1 Chikkabellandur Village,
Carmelaram Road Post Varthur Ho[li]
Bangalore - 560 035

| | | |
|--|-------|----------------------------------|
| | 4.3.1 | Strategic Brand management |
| | 4.3.2 | International marketing strategy |
| | 4.3.3 | Digital Marketing |
| | | Human Resource |
| | 4.4.1 | Strategic HRM |
| | 4.4.2 | International HRM |
| | 4.4.3 | Talent and Knowledge management |
| | 4.8 | Dissertation |

MCA PROGRAM

| Semester | Course Code | Course Name |
|--------------------------|-------------|--|
| 1 st Semester | MCA101T | Problem Solving Techniques using C |
| | MCA102T | Accounting and Financial Management |
| | MCA103T | Digital Electronics and Microprocessor |
| | MCA104T | Discrete Mathematics |
| | MCA105P | PROBLEM SOLVING TECHNIQUES USING C LAB |
| | MCA106P | Accounting and Financial Management Lab |
| 2 nd Semester | MCA201T | Data Structures |
| | MCA202T | Database Management System |
| | MCA203T | Computer Networks |
| | MCA204T | Operating System |
| | MCA205P | Data Structures Lab |
| | MCA206P | DBMS Lab |
| 3 rd Semester | MCA301T | File Structures |
| | MCA302T | Object Oriented Analysis and Design using UML |
| | MCA303T | Theory of Computation |
| | MCA304T | Statistical Analysis |
| | MCA305P | File Structures Lab |
| | MCA306P | Object Oriented Analysis and Design using UML Lab |
| | MCA307T | Soft Core – Quantitative, Teaching and Research Aptitude |



[Signature]
Principal

Krupanidhi Group of Institutions
12/1 Chikkabellandur Village,
Carmelaram Road Post Varthur Hobli
Bangalore - 560 035

| | | |
|--------------------------|--------------------|---|
| 4 th Semester | MCA401T | Advanced Java Programming |
| | MCA402T | Advanced Algorithms |
| | MCA403T | Advanced Software Engineering |
| | MCA404T | Quantitative Techniques |
| | MCA405P | Advanced Java Programming Lab |
| | MCA406P | Advanced Algorithms Lab |
| | MCA407T | Soft Core – Soft Skills and Personality Development |
| 5 th Semester | MCA501T | Advanced Web Programming |
| | MCA502T | Advanced Database Management Systems |
| | MCA503T | Artificial Intelligence |
| | MCA504T | Open Elective |
| | MCA505P | Advanced Web Programming Lab |
| | MCA506P | Mini Project |
| 6 th Semester | MCA501T | Elective – I |
| | MCA502T | Elective – II |
| | MCA503P | Main Project |
| | List of Electives | Distributed Operating Systems |
| | | Software Testing |
| | | Parallel Algorithms |
| | | Compiler Design |
| | | Multimedia Communication |
| | | e-Governance |
| | | Image processing |
| | | Mobile Computing |
| | | TCP / IP |
| | | Cloud Computing |
| | | Storage Area Network |
| | | Data Mining |
| | Big Data Analytics | |
| | Mobile computing | |

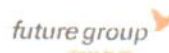


[Signature]
Principal

Krupanidhi Group of Institutions
12/1 Chikkabellandur Village,
Carmelaram Road Post Varthur Hobli
Bangalore - 560 026

| | |
|-----------------------------|-----------------------------|
| Airbus | Ideastream Ventures LLP |
| Allegis Group | Indigo |
| AM Motors | Infoedge India |
| Axis Bank | InWara |
| Big Basket | iPrimed |
| Bose Corporation | Jaro Education |
| BodyCraft | Keechery Engineering |
| CBM | Kumari Builders & Devlopers |
| Clear Tax | Kurl-on |
| Decathlon | Muthoot Group |
| Dixcy Textile | Odessa Technologies |
| Dyson | Pin Click |
| Easyhomebuy Services | Purvankara |
| Electrowheelz | Religare Securities |
| Evolve Media Solution | Settlin |
| Fidelity National Financial | FF21 |
| Flexi-i Partners | Saint-Gobain |
| Flipkart | Shobha Developers |
| Focus Fitness | TATA Capital |
| Future Retail | Toyota Tsusho |
| GreyCaps | TTK Services |
| HDFC Mutual FUND | Yaantra |
| IBM | |

RECRUITING PARTNERS PLACEMENTS



Bearesh
Principal

Krupanidhi Group of Institutions
12/1 Chikkabellandur Village,
Carmelaram Road Post Varthur Hobli
Bangalore - 560 035

FACILITIES

The campus life at Krupanidhi is anything but that of a traditional college. Sprawled out on a 11- Acre Campus amidst lots of Greenery, the Institutions has various number of facilities including Hostels, a student Cafeteria serving multiple Cuisines to satisfy different palates, a Gym and a Fitness Center with state of the art equipment imported from Italy, Sports Arena with facilities for various Games, a Digital Library as well as Transport facilities for our students and staff. Krupanidhi has a Wi-Fi Campus allowing the students flexibility and luxury of working from any part of the campus at any time. It is built to ensure and encourage all round development of its students, Nurturing the World of Tomorrow.

CAMPUS LIFE



CLASSROOM

Well designed & fully equipped



ATM

24/7 ATM facility



CAMPUS

Spread over a sprawling 11 acre World-class, serene campus.



KNOWLEDGE CENTER

Digital Library with access to internet along with helinet & wi-fi facilities



CAFETERIA

Cafeteria offers a range of Indian Cuisine, Ice Cream, and Beverages.



TRANSPORT

Krupanidhi provides free shuttle service



SPORTS AMENITIES

Encourages & promotes sporting activities



CAMERA

Campus is completely under CCTV surveillance



TECHNO GYM

State of the art Fitness Center inside our campus



STATIONARY

Our in-house Stationary Store provides a wide range of stationaries

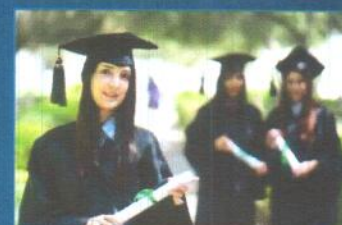


Principal
Krupanidhi Group of Institutions
17A Chikkabellur Village,
Chikkabellur Road, Varthur Hobli
Bangalore - 560 035



Krupanidhi Group of Institution's

Journey



KRUPANIDHI GROUP OF INSTITUTIONS

#12/1, Chikkabellandur, Carmelaram Post, Varthur Hobli, Off Sarjapur Road, Bengaluru, Karnataka 560035.



Krupanidhi Group of Institutions
 #12/1, Chikkabellandur, Villages
 Carmelaram Post, Varthur Hobli
 Bengaluru - 560035